

Hep_vO[®]

Toni & Guy Add Style And Performance To Salon Wash Basins

Hepworth Plumbing Products offers a hygienic self-sealing waste valve that provides an alternative to traditional water seal traps or 'U' bends. It provides simplified installation and greater freedom in room layout.



Specification

Hep_vO[®] complies with the requirements of BS5572:1994 Code of Practice for Sanitary pipework and Document H of the Building Regulations 1985 'Drainage and Waste Disposal'.

Case Study

Hep_vO[®] Self-sealing Waste Valves



Hep_vO[®]

Case Study

Toni & Guy Add Style And Performance To Salon Wash Basins

The Toni & Guy hairdressing salon in Sheffield has become the latest 'convert' to the advanced pipe systems manufactured by Hepworth Plumbing Products, part of Hepworth Building Products which has its headquarters in the city. Innovations from Hepworth, including the Hep_vO[®] waste valve, have proved the ideal solution to dealing with the colorants, perming solutions and other chemicals used, whilst avoiding wash basin blockages.

700 Customers A Week

The salon washes, cuts and styles some 700 customers in an average week. With around 40 per cent of UK women using hair colorants, the basin waste systems have to handle not only shampoo and conditioner but a variety of strong and viscous chemicals, some of which have high alkaline or acid contents.

The basins were previously fitted with standard 'U' bends or water seal traps. However, they had to be unblocked every month as hair and treatments accumulated in the traps, hindering the free flow of waste water. By contrast the Hep_vO[®] valve makes use of a special membrane which opens to allow water to flow through it but closes to create an air tight seal when the flow ceases. In the open position it is, in effect, a straight tube which, therefore, assists free passage of waste.

Blockages Eliminated

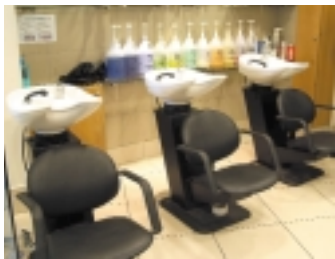
Fitted neatly under each of the salon's basins, the valves have eliminated blockages, contributing not only to reduced maintenance costs but also to the high standards of hygiene demanded by Toni & Guy.

At the salon, the Hep_vO[®] valves are used in conjunction with another Hepworth system – HepFlex[®] Waste. This flexible pipe system simplifies installation where access is limited or wherever using rigid pipe and bends would be unnecessarily complex.

Says Chris Story, Toni & Guy franchisee in Sheffield: "There are probably few applications which demand so much of the wash basin systems but Hep_vO[®] seems to handle the challenge with ease, leaving us to get on with looking after our clients."



Hep₂O[®] Chris Story at work



Hep_vO[®] The wash basins



Hep_vO[®] The valve and flexible waste pipe

